



Access and Language Options



Login/Register



[Home](#)

[About Us](#)

[Places to Go](#)

[How to use DisabledGo](#)

[News and Blog](#)

[Site Map](#)

You Are Here: [Home](#) > [Places to Go](#) > Venue



## Holiday Inn Norwich City



Guide Last Updated: 25/10/2017



[Explain These Icons](#)

[Add To My Trip](#)

[View the Access Guide](#)

[Something Changed? Click Here](#)



Carrow Road, Norwich, NR1 1HU

0871 510 1371

<https://www.ihg.com/holidayinn/hotels/gb/en/norwich/nwicr/hoteldetail>

### Venue Reviews

Average Rating: ★★★★★

[Review this Venue](#)

## Access Guide

Hotel Introduction

Collapse -

### Hotel Information

Collapse -

- The hotel has its own parking facilities.
- This hotel has its own restaurant located on the ground floor.
- Conference/meeting facilities are available.
- The conference/meeting facilities are located on the ground floor.

### Room Information

Collapse -

- The hotel has 150 rooms in total.
- There is an/are accessible room(s) within the hotel.
- The accessible room(s) is/are located on floors 1-6, opposite the lifts.
- The hotel has 8 accessible room(s) with accessible ensuite facilities.
- There is/are 8 accessible room(s) with a wet room/wheel in shower.
- There is an/are adjoining room(s) available for the accessible room(s).
- There are no rooms on the ground floor.
- There is an/are adjoining room(s) available for the standard room(s).

[Cookie Policy](#)

; are accessed via stairs or lift.

## Auxiliary Aids

Collapse -

- Vibrating pillows with flashing beacons are available on request.
- Bed raisers are not available on request.
- Bath mats are available on request.
- All televisions have subtitles available.

## Getting Here

Collapse -

## By Road

Collapse -

- This hotel is located next to Norwich City Football Club, to the south-east of the city centre. Exit the A47 onto the A146 into Norwich and then turn right into Martineau Lane. Take the second exit at the next roundabout and then turn right at the traffic lights onto King Road. Follow this road down and over the river. Continue past the football ground and turn right onto Canary Way, then turn right again onto Carrow Road. The hotel is then on the right.
- This hotel has limited car parking spaces located in front of the hotel. The main car park is located further along Carrow Road, next to the football ground. This parking is reserved for hotel guests.

## By Bus

Collapse -

- There is a bus stop within 150 metres of the hotel.
- Blue Line 26 and 26A buses stop at the Carrow Park bus stop on Carrow Road.
- [For more information on Blue Line 26 and 26A buses please click here \(opens new tab\).](#)

## By Train

Collapse -

- The nearest Railway Station is Norwich.
- Norwich station is approximately half a mile from the hotel. Blue Line 26 and 26A buses leave from just outside the station to the Carrow Park bus stop.
- [For more information on National Rail please click here \(opens new tab\).](#)
- [For more information on Greater Anglia please click here \(opens new tab\).](#)

## Getting Help and Assistance

Collapse -

- There is a member of staff available for help and assistance.
- Staff receive disability awareness/equality training.
- Staff do not receive deaf awareness training.
- There is a member of staff trained in basic British Sign Language.
- The alternative formats documents can be provided in include; large print on request.
- There is not an assistance dog toilet or toileting area at the venue/near by.
- Water bowls for assistance dogs are not available.
- There are mobility aids available.
- The mobility aids available include shower chairs.
- To obtain mobility aids please contact reception.

## Parking

Collapse -

[Cookie Policy](#)

Collapse -

- The hotel does have its own limited parking facilities.
- The car park is located in front of the hotel.
- The car park type is open air/surface.
- The car park does not have a height restriction barrier.
- The car park does not have a barrier control system.
- The car park surface is block paving.
- There is a/are Blue Badge parking bay(s) available.
- The Blue Badge bay(s) is/are clearly marked and signposted.
- There is/are 8 designated Blue Badge parking bay(s) within the car park.
- The dimensions of the designated Blue Badge parking bay(s) surveyed are 405cm x 540cm (13ft 3in x 17ft 9in).
- There is not a 120cm hatched zone around the Blue Badge parking bay(s).
- Parking spaces for Blue Badge holders do need to be booked in advance.
- There are bollards in front of some of the Blue Badge bays.
- Clearly marked/signposted parent and child parking bays are not available.
- All parking spaces are provided on a first come first served basis.
- There are additional car parks for staff and visitors.
- There is a staff car park to the rear of the hotel and an overflow customer car park to side of the hotel, outside the Norwich City football ground.



Paying	Collapse -
<ul style="list-style-type: none"> <li>• There are parking charges for the car park.</li> </ul>	
Access from the Car Park	Collapse -
<ul style="list-style-type: none"> <li>• The route from the car park to the entrance is accessible to a wheelchair user with assistance.</li> <li>• Assistance may be required because there is/are uneven surfaces.</li> <li>• The entrance is clearly visible from the car park.</li> <li>• The surface on the approach to the entrance is block paving.</li> <li>• There is not a road to cross between the car park and the entrance.</li> <li>• The nearest designated Blue Badge parking bay is approximately 14m (15yd 11in) from the hotel entrance.</li> </ul>	
Drop-off Point(s)	Collapse -
<ul style="list-style-type: none"> <li>• There is not a/are not clearly marked drop-off point(s).</li> </ul>	
Comments	Collapse -

Cookie Policy is charged at £5.95 per car for an payable at the hotel reception

before check out.

## Outside Access (Hotel Entrance)

Collapse -

### Entrance

Collapse -

- This information is for the entrance located at the front of the hotel.
- The entrance area/door is clearly signed.
- There is step free access at this entrance.
- There is a canopy or recess which provides weather protection at this entrance.
- There is a dark mat or floor marking at this entrance that might be perceived as a hole.
- The entrance door(s) does not/do not contrast visually with its immediate surroundings.
- The intercom is in a suitable position to allow wheelchair users to gain access.
- The height of the intercom is 100cm (3ft 3in).
- A key card is required for access at this entrance.
- The height of the key card reader is 80cm.
- The main door(s) open(s) automatically.
- The door(s) is/are double width.
- The width of the door opening is 150cm.
- There is a second set of doors.
- The door(s) open(s) automatically.
- The door(s) is/are double width.
- The width of the door opening is 148cm.
- There are bollards at this entrance.
- The gradient of the slope is very easy.



## Reception

Collapse -

### Reception

Collapse -

- The reception point is located just inside the entrance.
- The reception point is approximately 5m (5yd 1ft) from the hotel entrance.
- The reception area/desk is clearly visible from the entrance.
- There is step free access to the reception point.
- There is a clear unobstructed route to the reception point.
- There are no windows, TVs, glazed screens or mirrors behind the reception point which could adversely affect the ability of someone to lip read.
- The reception counter is not placed in front of a background which is patterned.
- The lighting levels at the reception point are good.
- The height of the reception counter is high (110cm+).

[Cookie Policy](#)



- There is sufficient space to write or sign documents on the counter.
- There is a lowered section of the counter.
- The lowered section of the counter is not at the recommended height of 76cm.
- There is sufficient space to write or sign documents on the lowered section of the counter.
- There is a clear knee recess beneath the lowered section of the counter.
- The clear knee recess does not have the recommended dimensions of 70cm (height) x 50cm (depth).
- The counter is staffed.
- There is a hearing assistance system at the reception point.
- The type of system is a fixed loop.
- The hearing assistance system is signed.
- Staff are trained to use the system.
- Signs and universally accepted symbols or pictograms, indicating lifts, stairs, WCs, circulation routes and other parts of the building are not provided in the reception area.
- The type of flooring in the reception area is tiles.



Reception Waiting Area Collapse -

- There is a waiting area close to the reception point.
- Access to the waiting area is unobstructed.
- There are seats with armrests on both sides.
- There is sufficient space for a wheelchair user to use the waiting area.

Getting Around

Collapse -

Access Collapse -

- There is step free access throughout the building.



Circulation Collapse -

- There are doors in corridors/walkways which have to be opened manually.
- The type of flooring in corridors/walkways is carpet, tiles and laminate.
- There is flooring in corridors/walkways which includes patterns or colours which could be confusing or look like steps or holes to some people.
- There is good colour contrast between the walls and floor in all corridors/walkways.
- The lighting levels are good.
- Access to other floors/levels is via stairs and lift.



Cookie Policy

Collapse -



<ul style="list-style-type: none"> <li>• Wayfinding signage is provided.</li> <li>• The colour, design and typeface of signs is consistent throughout the building.</li> </ul>	
<p>Audio</p> <ul style="list-style-type: none"> <li>• This venue does play background music in public areas.</li> <li>• Music is played in the reception, bar, restaurant, fitness suite areas and all corridors.</li> </ul>	<p>Collapse -</p>

Eating and Drinking (Bar)

Collapse -

- The following information is for the bar.
- The bar is located on the ground floor, directly to the left as you enter.
- There is step free access to the bar.
- Full table service is available.
- Food and/or drinks can be ordered from the service counter.
- Food and/or drinks can be brought to the table.
- The height of the service counter is high (110cm+).
- There is not a lowered section of the counter.
- There is not a hearing assistance system.
- The hearing assistance system is not signed.
- There is step free access within the bar.
- There is ample room for a wheelchair user to manoeuvre.
- This area does play background music.
- The type of flooring in this area is carpet and wood.
- No tables are permanently fixed.
- No chairs are permanently fixed.
- Some chairs have armrests on both sides.
- The nearest table is approximately 10m from the entrance/opening.
- The nearest table is approximately 4m from the till/counter.
- The standard height for tables is 72cm.
- Plastic/takeaway cups are available.
- Plastic/takeaway cutlery is available.
- Drinking straws are available.
- Children are welcomed in the bar area.
- There are hand held menus available.
- Menus are not available in Braille.
- Menus are not available in large print.
- Picture menus are not available.
- Menus are clearly written.
- Menus are presented in contrasting colours.
- The type of food served here is hot and cold meals and snacks.
- The lighting levels are good.



<p>Comments</p> <p>some high tables.</p>	<p>Collapse -</p>
--	-------------------

[Cookie Policy](#)

- Sofas and coffee tables are available just outside the bar in the reception area.

## Eating and Drinking (Restaurant)

Collapse -

- The following information is for the restaurant.
- The restaurant is located on the ground floor, to the far side of the bar.
- There is step free access to the restaurant.
- Full table service is available.
- There is not a hearing assistance system.
- There is step free access within the restaurant.
- There is ample room for a wheelchair user to manoeuvre.
- This area does play background music.
- The type of flooring in this area is carpet and wood.
- No tables are permanently fixed.
- No chairs are permanently fixed.
- No chairs have armrests on both sides.
- The nearest table is approximately 24m from the entrance/opening.
- The nearest table is approximately 3m from the till/counter.
- The distance between the floor and the lowest table is 72cm.
- The distance between the floor and the highest table is 73cm.
- Plastic/takeaway cups are available.
- Plastic/takeaway cutlery is available.
- Drinking straws are available.
- There are hand held menus available.
- Menus are not available in Braille.
- Menus are not available in large print.
- Picture menus are not available.
- Menus are clearly written.
- Menus are presented in contrasting colours.
- The type of food served here is hot and cold meals and snacks.
- The lighting levels are good.



## Conference / Meeting Facilities

Collapse -

- Conference/meeting facilities are available.
- The conference/meeting facilities are located on the ground floor, to the right of reception.
- There is step free access to the conference/meeting facilities.
- The door opening width(s) is/are 75cm+ for the room(s).
- There is not a hearing assistance system for the room(s).
- There is a/are chair(s) with armrests on both sides within the room(s).
- There is sufficient space for a wheelchair user to manoeuvre within the room(s).
- The lighting levels in the room(s) are adjustable.

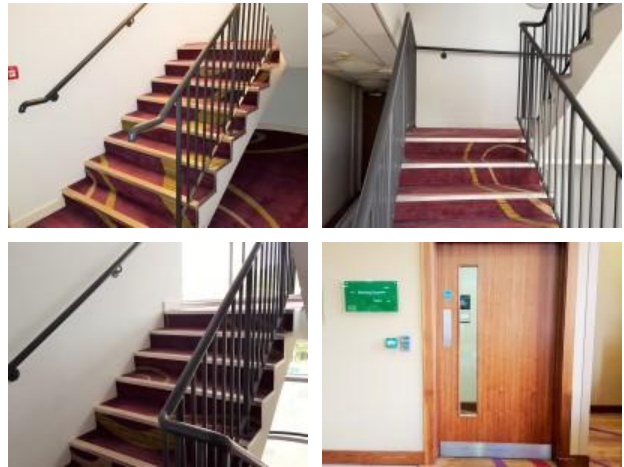


[Cookie Policy](#)

## Other Floors

Collapse -

<p>Stairs</p> <ul style="list-style-type: none"> <li>• Stairs can be used to access other floors.</li> <li>• The stairs are for public use.</li> <li>• The stairs are located on the far right of the reception area as you enter, next to the meeting room.</li> <li>• Signs indicating the location of the stairs are clearly visible from the entrance.</li> <li>• There are manual, heavy, single doors to enter and exit the stairwell on all floors.</li> <li>• The floors which are accessible by stairs are G, 1, 2, 3, 4, 5 and 6.</li> <li>• There are 15+ steps between floors.</li> <li>• The height of the step(s) is/are between the recommended 15cm and 18cm.</li> <li>• The going of the step(s) is/are not between the recommended 30cm and 45cm.</li> <li>• The steps are clearly marked.</li> <li>• There is a/are handrail(s) at the step(s).</li> <li>• The steps have a handrail on both sides.</li> <li>• Handrails are at the recommended height (90cm-100cm).</li> <li>• Handrails do cover the flight of stairs throughout its length.</li> <li>• Handrails are easy to grip.</li> <li>• Handrails do extend horizontally beyond the first and last steps.</li> <li>• There is a landing.</li> <li>• Clear signs indicating the facilities on each floor are provided on landings.</li> <li>• The lighting levels at the steps are good.</li> </ul>	Collapse -
<p>Comments</p> <ul style="list-style-type: none"> <li>• There is a keypad, 110cm - 116cm high, to access the stairs from reception.</li> </ul>	Collapse -



## Lift

Collapse -

- There is a lift for public use.
- The lift is located to the left of the reception area, just before the bar.
- Signs indicating the location of the lift are clearly visible from the entrance.
- The lift is approximately 11m (12yd 1in) from the hotel entrance.
- The lift is a standard lift.
- A member of staff does not need to be notified for use of the lift.
- The floors which are accessible by this lift are G, 1, 2, 3, 4, 5 and 6.
- Clear signs indicating the facilities on each floor are provided on lift lobby landings.




[Cookie Policy](#)



- There is a clear level manoeuvring space of 150cm x 150cm in front of the lift.
- Lift doors do contrast visually with lift lobby walls.
- The external controls for the lift are within 90cm - 110cm from the floor.
- The colour contrast between the external lift controls and the control plate is poor.
- The colour contrast between the external lift control plate and the wall is poor.
- The clear door width is 90cm (2ft 11in).
- The dimensions of the lift are 108cm x 210cm (3ft 7in x 6ft 11in).
- There are no separate entry and exit doors in the lift.
- There is a mirror to aid reversing out of the lift.
- There is a list of floor services available within the lift.
- The lift does have a visual floor indicator.
- The lift does have an audible announcer.
- The controls for the lift are within 90cm - 120cm from the floor.
- There is not a hearing loop system.
- The lift does not have Braille markings.
- The lift does have tactile markings.
- The lighting levels in the lift are good.
- There is a/are similar lift(s) available.

Accessible Room(s) (212, 214, 312, 314, 412, 414, 514 and 614)

Collapse -

<p>Accessible Room Information <span style="float: right;">Collapse -</span></p> <ul style="list-style-type: none"> <li>• The details in this section relates to the accessible room(s) with a wet room/wheel in shower.</li> <li>• This type of accessible room is located on floors 1-6, opposite the lifts.</li> <li>• There is step free access to this type of accessible room.</li> <li>• All accessible rooms of this type have similar specifications.</li> <li>• The ensuite transfer space for the accessible rooms varies from left to right.</li> <li>• Guests do not need to open a door between the lift and the room(s).</li> <li>• The narrowest width of the corridor leading to the room surveyed was 196cm.</li> </ul>	
<p>Bedroom Features <span style="float: right;">Collapse -</span></p> <ul style="list-style-type: none"> <li>• The accessible room surveyed is located on the sixth floor.</li> <li>• The accessible room surveyed at the time of the visit was Room 614.</li> <li>• There is step free access to the accessible room surveyed, via lift.</li> <li>• There is written and numbered signage on or near the accessible room door.</li> <li>• The door is key card activated.</li> </ul> <p>height is 104cm.</p> <p><a href="#">Cookie Policy</a></p>	

- The width of the door is 86cm (2ft 10in).
- There are lowered spy holes available.
- The bed type is double.
- The bed height is not adjustable.
- The height of the bed is 61cm (2ft).
- The measurement between the bed base and floor is 1cm ().
- The bed is not moveable.
- The room does have an unobstructed minimum turning space of 150cm x 150cm next to the bed.
- The desk is not height adjustable.
- The desk knee recess has the recommended dimensions of 70cm (height) x 50cm (depth).
- The room surveyed had a desk chair with armrests and an armchair.
- Wardrobes have been adapted to allow use from a seated position.
- Light switches are between 75cm and 120cm (4ft) from floor level.
- Electric sockets are not between 40cm and 100cm (4ft) from floor level.
- The window control type(s) for the room is a/are standard lever(s).
- There is an emergency alarm in the room.
- The emergency pull cord alarm is within reach and fully functional.
- The emergency alarm rings to reception.
- There is not a flashing fire alarm beacon within the room.
- The type of flooring is carpet.

Ensuite Facilities

Collapse -

- The ensuite door opens outwards.
- The door weight is light.
- The door is locked by a locking handle.
- The width of the door to the ensuite is 80cm (2ft 7in).
- The dimensions of the ensuite are 190cm x 238cm (6ft 3in x 7ft 10in).
- The ensuite does have an unobstructed minimum turning space of 150cm x 150cm in front of the toilet seat.
- The ensuite has a non slip floor.
- There is an emergency alarm within the ensuite.
- The emergency pull cord alarm is within reach and fully functional.
- The emergency alarm rings to reception.
- There is a flashing fire alarm beacon within the ensuite.
- Disposal facilities are available.
- There is a/are pedal waste paper bin disposal units.
- There is a mirror.
- The mirror is not placed at a lower level or at an angle for ease of use.

[Cookie Policy](#)

diately next to or behind the toilet.

- The shelf is between 90cm and 100cm.
- There is a wash basin.
- The wash basin can be reached from seated on the toilet.
- The wash basin is placed higher than 74cm (2ft 5in).
- The height of the wash basin is 78cm.
- There are vertical wall-mounted grab rails on both sides of the wash basin.
- The tap type is lever.
- There is a mixer tap.
- There is not a soap dispenser.

## Toilet Details

Collapse -

- The height of the toilet seat above floor level is 48cm (1ft 7in).
- The toilet has a covered cistern.
- There is a lateral transfer space.
- As you face the toilet pan the transfer space is on the right.
- The lateral transfer space is 116cm (3ft 10in).
- There is a flush on the transfer side.
- There is not a spatula type lever flush.
- There is a dropdown rail on the transfer side.
- There is a/are wall-mounted grab rail(s) available.
- As you face the toilet, the wall mounted grab rails are on the left.
- There is not a vertical wall-mounted grab rail on the transfer side.
- There is a horizontal wall-mounted grab rail on the opposite side of the seat to the transfer space.
- There is a toilet roll holder.
- The toilet roll holder can be reached from seated on the toilet.
- The toilet roll holder is not placed higher than 100cm (3ft 3in).
- The height of the toilet roll holder is 80cm (2ft 7in).

## Shower Details

Collapse -

- The ensuite has a wheel in shower.
- The shower area is accessed via an easy slope.
- The shower head is height adjustable.
- The shower control type is twist/turn.
- A shower chair is available.
- There is a/are wall-mounted grab rail(s) available for the shower.
- Horizontal and/or dropdown rails are available on both sides of the shower seat.

## Colour Contrast and Lighting

Collapse -

[Cookie Policy](#)

- The colour contrast between the external hotel room door and wall is good.
- The colour contrast between the internal hotel room door and wall is good.
- The colour contrast between the hotel room walls and floor is good.
- The colour contrast between the external ensuite door and wall is good.
- The colour contrast between the internal ensuite door and wall is good.
- The colour contrast between the ensuite walls and floor is good.
- The colour contrast between the drop down rail(s) and wall is poor.
- The colour contrast between the wall-mounted grab rail(s) and wall is poor.
- The toilet seat colour contrast is poor.
- The lighting levels in the room are good.
- The lighting levels in the ensuite are good.

## Comments

Collapse -

- The accessible room on the sixth floor is an Executive Room and contains; a mini fridge, individually wrapped toiletries, an in room safe, a dressing gown, slippers and a Nespresso coffee machine.
- All accessible ensembles have thermostatic valves installed.

## Standard Room(s)

Collapse -

## Bedroom Features

Collapse -

- The room surveyed is located on the fifth floor.
- The room surveyed at the time of the visit was Room 507.
- There is step free access to the room surveyed, via lift.
- There is written and numbered signage on or near the room door.
- The width of the door is 86cm (2ft 10in).
- The bed type is double.
- The height of the bed is 61cm (2ft).
- The measurement between the bed base and floor is 1cm ().
- Light switches are within 120cm (3ft 11in) from floor level.
- There is not an emergency alarm in the room.
- There is not a flashing fire alarm beacon within the room.
- The type of facilities within the ensuite include; a toilet, a wash basin and a shower.
- The ensuite door opens inwards.
- The width of the door to the ensuite is 75cm (2ft 6in).
- There is not an emergency alarm within the ensuite.

[Cookie Policy](#)




<ul style="list-style-type: none"> <li>• There is not a flashing fire alarm beacon within the ensuite.</li> <li>• The tap type is twist/turn.</li> <li>• There is a mixer tap.</li> </ul>	<p>Colour Contrast and Lighting <span style="float: right;">Collapse -</span></p> <ul style="list-style-type: none"> <li>• The colour contrast between the external hotel room door and wall is good.</li> <li>• The colour contrast between the internal hotel room door and wall is good.</li> <li>• The colour contrast between the hotel room walls and floor is good.</li> <li>• The colour contrast between the external ensuite door and wall is good.</li> <li>• The colour contrast between the internal ensuite door and wall is good.</li> <li>• The colour contrast between the walls and floor in the ensuite is poor.</li> <li>• The lighting levels in the room are good.</li> <li>• The lighting levels in the ensuite are good.</li> </ul>
<p>Comments <span style="float: right;">Collapse -</span></p> <ul style="list-style-type: none"> <li>• There are Executive Suites on floors 3, 4, 5 and 6 which contain; a separate seating area, a dining table, a mini fridge, individually wrapped toiletries, an in room safe, a dressing gown, slippers and a Nespresso coffee machine.</li> </ul>	

Fitness Suite (Mini Gym)

Collapse -

<p>Access to Fitness Suite <span style="float: right;">Collapse -</span></p> <ul style="list-style-type: none"> <li>• The fitness suite is located on the first floor, on the far right hand side as you exit the lifts.</li> <li>• The fitness suite is 23m (25yd 6in) from the lift.</li> <li>• There is level access to the fitness suite.</li> <li>• Level access is by lift.</li> <li>• There are doors into the fitness suite.</li> <li>• The doors open away from you (push).</li> <li>• The doors are single.</li> <li>• The doors are heavy.</li> <li>• The opening is 86cm (2ft 10in) wide.</li> </ul>	<p>Fitness Suite (General) <span style="float: right;">Collapse -</span></p> <ul style="list-style-type: none"> <li>• Staff receive no training in assisting disabled people.</li> <li>• A portable hearing loop is not available for induction.</li> <li>• There is not clear manoeuvring space between equipment.</li> <li>• There is level access to all of the equipment.</li> </ul> <p><a href="#">Cookie Policy</a></p>
--	---



Accessible Toilet(s)

Collapse -

- There is an/are accessible toilet(s) for public use.

Location and Access

Collapse -

- The accessible toilet surveyed is not for the sole use of disabled people.
- This accessible toilet is located in toilet area to the left of reception.
- This accessible toilet is approximately 10m (10yd 2ft) from the hotel entrance.
- There is step free access to the accessible toilet.



Features and Dimensions

Collapse -

- This is a shared toilet.
- A key is not required for the accessible toilet.
- There is pictorial signage on or near the toilet door.
- The door opens outwards.
- The door is heavy.
- The door is locked by a lever twist.
- The width of the accessible toilet door is 86cm (2ft 10in).
- The dimensions of the accessible toilet are 215cm x 223cm (7ft 1in x 7ft 4in).
- The accessible toilet does have an unobstructed minimum turning space of 150cm x 150cm.
- The toilet has not got a non slip floor.
- There is a lateral transfer space.
- As you face the toilet pan the transfer space is on the left.
- The lateral transfer space is 132cm (4ft 4in).
- There is a flush on the transfer side.
- There is a spatula type lever flush.
- There is a dropdown rail on the transfer side.
- There is an emergency alarm.
- The alarm was out of reach (higher than 10cm (4") from floor) when surveyed.
- There is a flashing fire alarm beacon within the toilet.
- Disposal facilities are available in the toilet.
- There is a/are female sanitary and general domestic waste disposal units.
- There is a/are coat hook(s).
- There are coat hooks in the toilet at 123cm and 183cm from the floor.

Position of Fixtures

Collapse -

- There is a/are wall-mounted grab rail(s) available.
- As you face the toilet the wall-mounted grab rail(s) is/are on both sides.
- There is a vertical wall-mounted grab rail on the transfer

[Cookie Policy](#)

- There is a horizontal wall-mounted grab rail on the opposite side of the seat to the transfer space.
- There is a mirror.
- The mirror is placed at a lower level or at an angle for ease of use.
- There is not a shelf next to the toilet.
- The toilet has a cistern.
- The height of the toilet seat above floor level is 48cm (1ft 7in).
- There is a toilet roll holder.
- The toilet roll holder can be reached from seated on the toilet.
- The toilet roll holder is not placed higher than 100cm (3ft 3in).
- There is a wash basin.
- The wash basin can be reached from seated on the toilet.
- The wash basin is not placed higher than 74cm (2ft 5in).
- There are vertical wall-mounted grab rails on both sides of the wash basin.
- The wash basin tap type is lever.
- There is a mixer tap.
- There is a soap dispenser.
- The soap dispenser cannot be reached from seated on the toilet.
- The height of the soap dispenser is 104cm.
- There is a towel dispenser.
- The towel dispenser cannot be reached from seated on the toilet.
- The towel dispenser is placed higher than 100cm (3ft 3in).
- The height of the towel dispenser is 109cm (3ft 7in).
- There is a hand dryer.
- The hand dryer cannot be reached from seated on the toilet.
- The hand dryer is not placed higher than 100cm (3ft 3in).

#### Colour Contrast and Lighting

Collapse -

- The contrast between the external door and wall is good.
- The contrast between the internal door and wall is good.
- The contrast between the dropdown rail(s) and wall is good.
- The contrast between the wall-mounted grab rail(s) to the left of the toilet and wall is good.
- The contrast between the wall-mounted grab rail(s) to the right of the toilet and wall is poor.
- The contrast between the wash basin wall-mounted grab rail(s) and wall is poor.
- The toilet seat colour contrast is poor.
- The contrast between the walls and floor is fair.
- The lighting levels are good.

Cookie Policy

Collapse -

- Baby changing facilities are located within the accessible toilet.
- The baby change table is not set against the wall, permanently fixed at 75cm from the floor.
- The baby change table is not height adjustable.
- The height of the baby change table once extended is 100cm (3ft 3in).

Comments

Collapse -

- The accessible toilet has a thermostatic valve installed.

Standard Toilet(s)

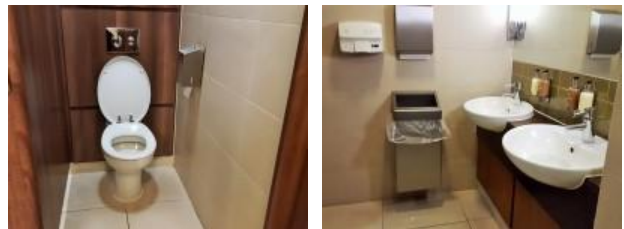
Collapse -

- Standard toilet facilities are available.

Access to Standard Female and Male Toilet(s)

Collapse -

- The female and male toilet facilities that were surveyed are located to the left of reception.
- The female and male toilets are approximately 9m (9yd 2ft) from the hotel entrance.
- There is step free access to the female and male toilet(s).
- There is pictorial and written text signage on or near the toilet door.
- An ambulant toilet with wall-mounted grab rails is not available.
- The wash basin tap type is lever.
- There is a flashing fire alarm beacon within the toilets.
- Lighting levels are good.
- There is a/are similar standard toilet(s) available.



Who we are...

- Homepage
- About Us
- Access Icons
- FAQs
- Contact Us
- Press and Media

The way we work...

- Website Conditions
- Acceptable Use Policy
- Cookie Policy
- Privacy Policy
- Accessibility Policy
- Common Access Guide Terms Explained

Our support for business

- Disabled Charities and Useful Links
- FAQs Around Our Surveyors

Follow @DisabledGo

Join us...

- Facebook
- Twitter
- Google+
- Switch to mobile site



eCommerce Solutions by PureNet